

29275 Northwestern Highway – Southfield, Michigan

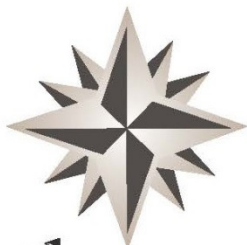


## OFFICE / MEDICAL SPACE FOR LEASE

- Up to 2,982 Square Feet Available
- Turn-key Ready Space Adjacent to Elevator
- Exterior Signage Available
- Abundant Parking
- Excellent Access to Highways
- Upgraded Lobby & Common Areas
- Beautifully Landscaped
- Professionally Managed

FOR LEASE :  
UP TO 2,982 SQUARE FEET

NORTHWESTERN MEDICAL CENTER  
SOUTHFIELD, MICHIGAN



Northwestern  
Medical Center

SUITE DETAILS:

Suite 202: 2,834 SF

Suite 207: 2,982 SF



For more information, please contact:

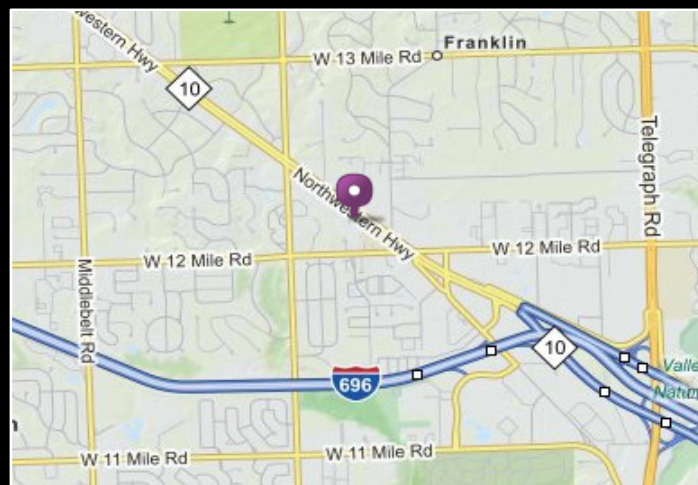
SCOTT MARCUS

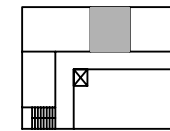
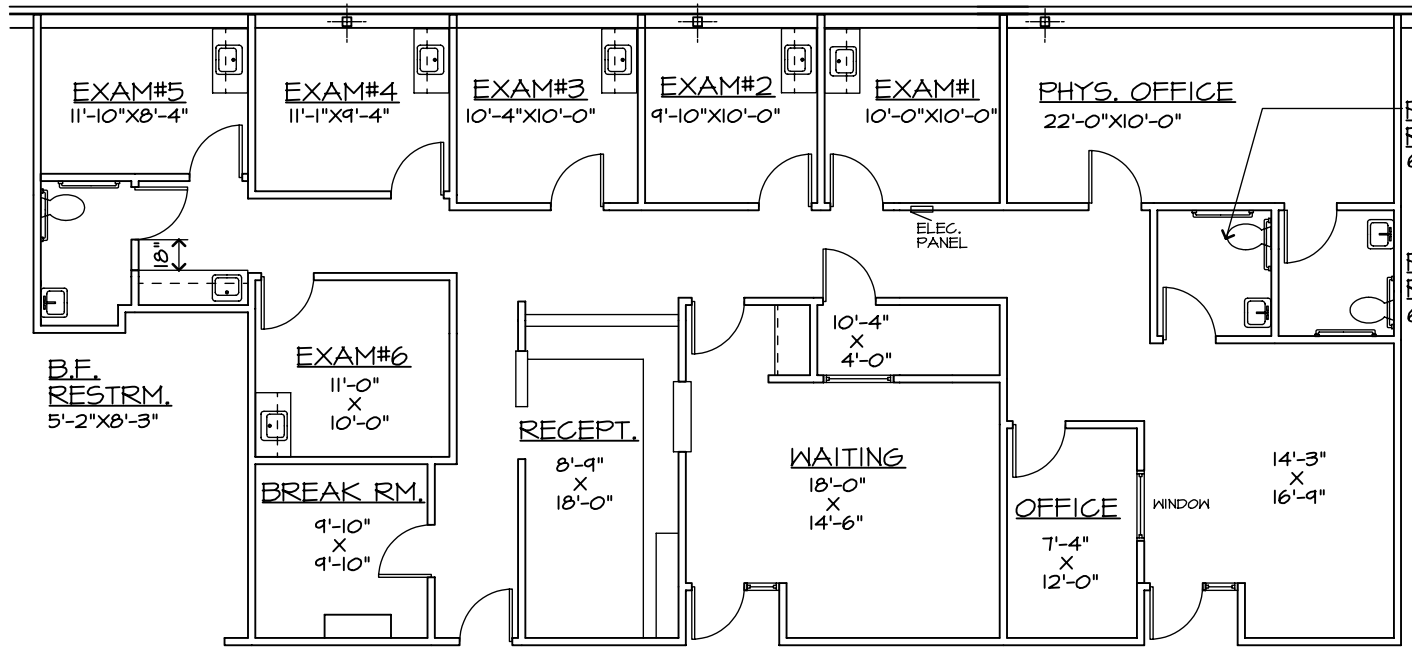
Office: 248.645.2600

Cell: 248.730.2227

Marcus@RSMDevelopment.com

**RSM** DEVELOPMENT  
& MANAGEMENT





NORTHWESTERN HWY.

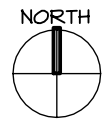
BUILDING CORRIDOR

**NORTHWESTERN  
MEDICAL  
BUILDING**

FOR INFORMATION CALL:

C/O SCOTT J. MARCUS  
RSM MANAGEMENT  
(248) 645-2600

NOTE:  
ALL DIMENSIONS ARE APPROX.  
INTERIOR DIMENSIONS.



**AS-BUILT PLAN FOR SUITE #202**

NOT TO SCALE

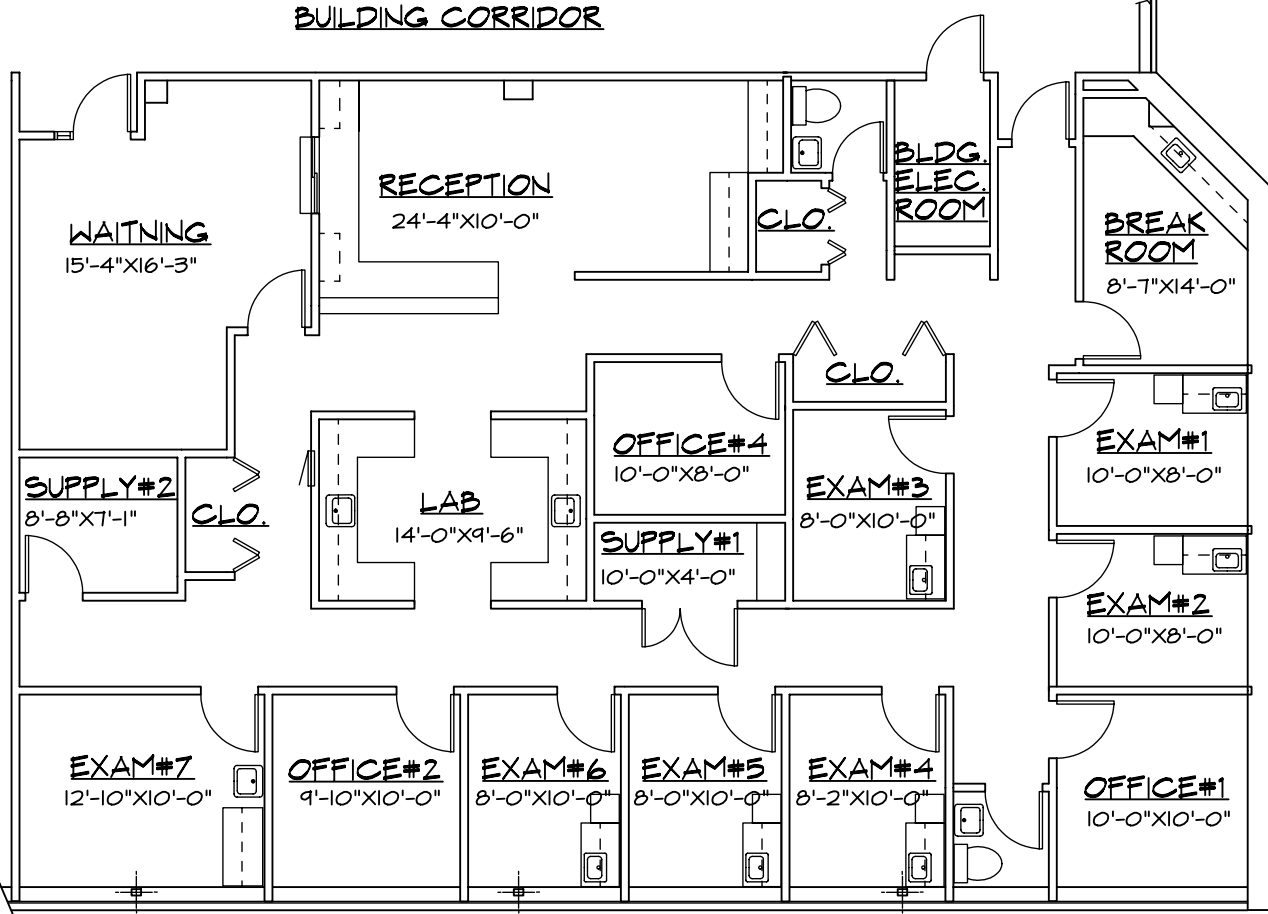
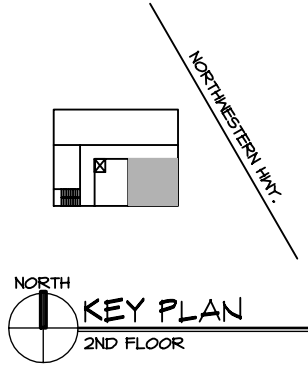
29275 NORTHWESTERN HIGHWAY  
SOUTHFIELD, MI

AREA: 2,834 RENTABLE SQ.FT.

2/2/12

# NORTHWESTERN MEDICAL BUILDING

29275 NORTHWESTERN HIGHWAY  
SOUTHFIELD, MI

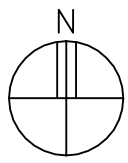


SUITE #207  
AREA: 2,982 RENTABLE SQ.FT

FOR INFORMATION CALL:

**RSM** DEVELOPMENT  
& MANAGEMENT

C/O SCOTT J. MARCUS  
RSM MANAGEMENT  
(248) 645-2600



SPACE AVAILABLE: SUITE #207

NOT TO SCALE



NOTE:  
I. ALL DIMENSIONS ARE APPROX.  
INTERIOR DIMENSIONS